



BIMETALLIC LUGS (XCX/XDX) FOR ALUMINUM CONDUCTORS

KEY FEATURES

- Range from 16 to 1600 mm²
- * One technology for all the sizes of cables
- * Friction welding technology
- * Crimped deep step independent installer's skills
- * Aluminium barrel and solid copper palm

TE Connectivity's (TE) XCX/XDX bimetallic lugs is the best solution to connect an aluminum conductor to a copper bar. These lugs can be used either with LV or MV terminations.

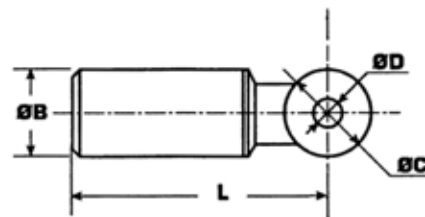
TE's XCX and XDX bimetallic lugs provide an age resistant current connection from the aluminum barrel to the solid copper palm. A single connector size for a given conductor cross section, independent of its compression ratio, is needed.

Customers can count on consistent, high quality products, driven by TE's proven innovation and backed by our extraordinary customer support.



XCX and XDX comply with the standards below:

- C 33090-1
- NF C 63-061 Class A
- IEC 61238-1 Class A



PRODUCT SELECTION INFORMATION

Description	Part Number	Cross Section (mm ²)	Connector Size (mm)				Weight (g)	Standard Package
			ØB	ØC	ØD	L		
XCX 16	719929-1	16	16	20	10,5	72	4	3
XCX 25	719930-1	25	16	20	10,5	72	40	3
XCX 35	719924-1	35	16	25	12,8	73,5	45	3
XCX 50	719923-1	50	20	25	12,8	73,5	65	3
XCX 70	719922-1	70	20	25	12,8	73,5	65	3
XCX 95	719921-1	95	20	25	12,8	73,5	60	3
XCX 120	719782-1	120	25	30	12,8	94	130	3
XCX 150	719783-1	150	25	30	12,8	94	125	3
XCX 185	739006-1	185	32	30	12,8	94	210	3
XCX 240	739007-1	240	32	30	12,8	94	200	3
XCX 300	1306957-1	300	40	36	16,5	137	380	3
XCX 400	1306962-1	400	40	36	16,5	137	240	3
XDX 500	708270-1	500	47	60 x 60	-	200	860	3
XDX 630	708270-2	630	47	60 x 60	4 x Ø9 30	200	800	3
XDX 800	708273-1	800	60	80 x 80	-	260	-	3
XDX 1000	708273-2	1000	60	80 x 80	-	260	-	3
XDX 1200	708275-1	1200	65	80 x 80	4 x Ø11 40	271	-	3
XDX 1600	-	1600	70	125 x 125	4 x Ø11 45	322	-	3

te.com/energy

© 2014 TE Connectivity Ltd. family of companies. All Rights Reserved. EPP-2246-10/14

Raychem, TE Connectivity and TE connectivity (logo) are trademarks. Other logos, product and/or company names might be trademarks of their respective owners. While TE has made every reasonable effort to ensure the accuracy of the information in this brochure, TE does not guarantee that it is error-free, nor does TE make any other representation, warranty or guarantee that the information is accurate, correct, reliable or current. TE reserves the right to make any adjustments to the information contained herein at any time without notice. TE expressly disclaims all implied warranties regarding the information contained herein, including, but not limited to, any implied warranties of merchantability or fitness for a particular purpose. The dimensions in this catalog are for reference purposes only and are subject to change without notice. Specifications are subject to change without notice. Consult TE for the latest dimensions and design specifications.

FOR MORE INFORMATION: TE Technical Support Centers

- | | |
|-------------------|-----------------------|
| USA: | + 1 800 327 6996 |
| France: | + 33 380 583 200 |
| UK: | + 44 0870 870 7500 |
| Germany: | + 49 896 089 903 |
| Spain: | + 34 916 630 400 |
| Benelux: | + 32 16 351 731 |
| Canada: | + 1 (905) 475-6222 |
| Mexico: | + 52 (0) 55-1106-0800 |
| Latin/S. America: | + 54 (0) 11-4733-2200 |
| China: | + 86 (0) 400-820-6015 |